

2" (51 mm) Inlet & Outlet Off-Road Exhaust System Products



From manifolds to tailpipes, only one company delivers this range of components in such a wide variety of sizes—Donaldson!

Mufflers

- Five muffler styles
- Mounts or installs in any position
- Aluminized steel construction
- All round with domed ends
- Slotted inlet/outlet connections
- Mufflers and body bands have matching black matte high temperature finish
- Estimated attenuation 12-18 dBA

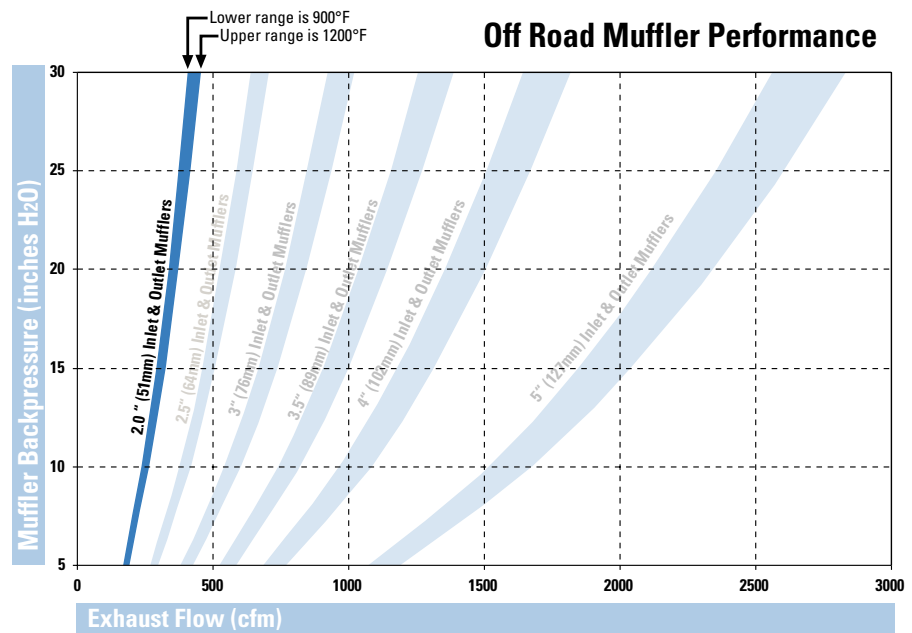
Compliment your System with Aluminized Steel Accessories

- Elbows
- Variety of clamps
- Tubes and pipes
- Connectors
- Stack caps

Donaldson®

2.0^{inches} 51^{mm} Inlet & Outlet Connection Mufflers

- Five muffler styles – all in-stock
- Mount or install in any position
- Aluminized steel construction
- All round with domed ends
- Slotted inlet/outlet connections
- Black matte high temperature finish
- Estimated attenuation 12-18 dBA



Converting from inches of water to inches of Mercury? Use this conversion: 13.6" H₂O = 1" Hg

Aluminized Steel Accessories for 2.0" (51mm) Systems

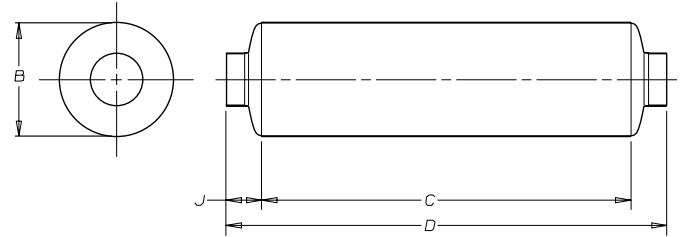
Part Description	Part Numbers
Elbow 90°	O.D.-O.D. - P207332 O.D.-I.D. - J008671, P207333
Elbow 45°	O.D.-O.D. - P207347 O.D.-I.D. - P207356
Connector	I.D.-I.D. - P207405
Straight Pipe	P206331 (10 ft./3m length)
Clamps	MaxGrip™ Bent Bolt - M001867 Band Clamp - J190050
Muffler Body Band	M002117 (finish matches muffler)
Stack Cap	P270532 (zinc plated)
Spark Arrestor	M060037

For other in-stock exhaust accessories and sizes, ask for a copy of Donaldson Exhaust Catalog, No. F110028.

2.0" (51 mm) Inlet/Outlet Muffler Specifications

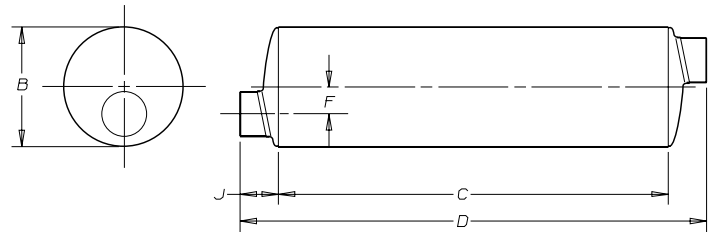
Style 1

Part No. M060479	inches	mm
Inlet & Outlet Slotted I.D.:	2.00	51
(B) Body Diameter:	6.00	152
(C) Body Length:	16.00	406
(D) Overall Length:	21.00	533
(J) Tube Length:	2.50	64
Weight:	7.6 lbs	3.45 kg



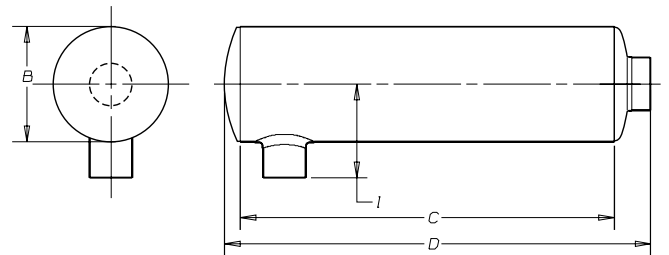
Style 2

Part No. M060480	inches	mm
Inlet & Outlet Slotted I.D.:	2.00	51
(B) Body Diameter:	6.00	152
(C) Body Length:	16.00	406
(D) Overall Length:	21.00	533
(F) Offset Tube:	1.50 (2)	38 (2)
(J) Tube Length:	2.50	64
Weight:	7.6 lbs	3.45 kg



Style 3

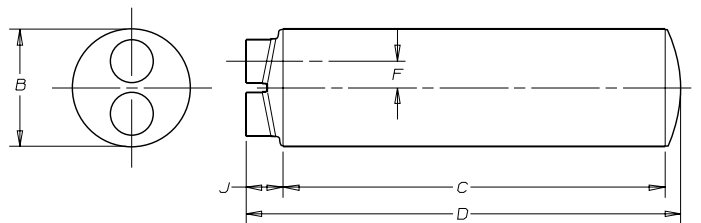
Part No. M060481	inches	mm
Inlet & Outlet Slotted I.D.:	2.00	51
(B) Body Diameter:	6.00	152
(C) Body Length:	16.00	406
(D) Overall Length:	19.12	486
(I) Tube Length:	5.00	127
Weight:	7.6 lbs	3.45 kg



Note: Flows in either direction

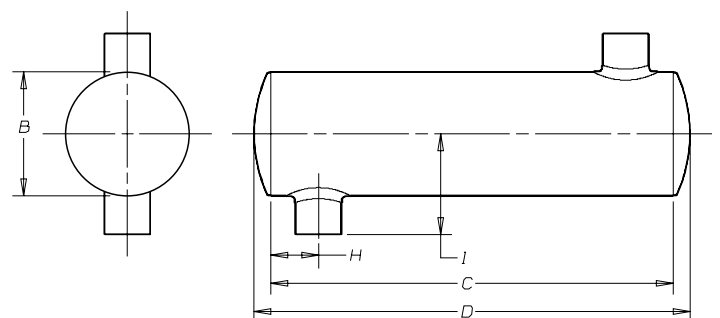
Style 5

Part No. M060482	inches	mm
Inlet & Outlet Slotted I.D.:	2.00	51
(B) Body Diameter:	6.00	152
(C) Body Length:	16.00	406
(D) Overall Length:	19.12	486
(F) Offset Tube:	1.50 (2)	380 (2)
(J) Tube Length:	2.50	64
Weight:	8.4 lbs	3.83 kg



Style 6

Part No. M060483	inches	mm
Inlet & Outlet Slotted I.D.:	2.00	51
(B) Body Diameter:	6.00	152
(C) Body Length:	16.00	406
(D) Overall Length:	17.24	438
(H) Tube Location:	2.00 (2)	51 (2)
(I) Tube Length:	5.00 (2)	127 (2)
Weight:	7.4 lbs	3.36 kg





Donaldson®

Donaldson Company, Inc.
Minneapolis, MN
55440-1299

www.donaldson.com

Brochure No. F111101 (7/05)

© 2005 Printed in the U.S.A.
Equal Opportunity Employer
Donaldson Company, Inc. reserves the
right to change or discontinue any model or
specification at any time and without notice.

United States & Canada
Tel: 952-887-3131

Belgium
Tel: 32-16-38-3811

Hong Kong
Tel: 852-2-2402-2803

Australia
Tel: 612-4350-2033